

# WELL-BILT

# INDUSTRIES



## AVIATION DOORS & OPERATORS

WELL BILT INDUSTRIES  
"THE HANGAR DOOR PEOPLE"  
1 WELL BILT ROAD  
P.O. BOX 100  
WILLISTON, FL 32696

# BIFOLD DOORS

**Simple All Steel Construction with WELL BILT Hardware gives us the edge in Bi-Folds**



## STANDARD FEATURES:

- All steel tube, rigid frame construction. (No galvanic corrosion, elasticity or welding problems associated with aluminum.)
- $\frac{3}{4}$ " to 1" Heavy duty steel hinge, Pins.
- Full ball bearing supported driveshafts and cable drum assemblies.
- $\frac{3}{16}$ " (min.) steel lift cables.  $\frac{1}{4}$ " Large Doors for 5X Safety Factor.
- Top and bottom weather seals.



- Automatic safety door jamb follower and endwall bottom lock. (Prevents door sail when traveling or raised along with positive lock at the bottom edge of door upon closure.)
- Direct Drive and Chain Drive Between Motor & Cable take-up Shaft (Depending on Door Size)
- Any voltage motor. (HP as needed for door size.)\*
- Electric motor brake.\*
- Push button controls.\*

\*Prewired



## OPTIONAL FEATURES:

- Pilot Door.
- Windows.
- Overhead operation/cable system.
- One lever, four point locking system.
- Automatic locking system. (Bottom mounted motors only)
- Electric Disconnect when door is down and locked.
- Upper limit emergency cutoff switch.
- Mechanical keyless entry.
- Wireless remote operation. (Auto locking req'd.) 1500'+ range.
- All NEC code compliance.
- Winter door seal kit.



- SIMPLE INSTALLATION  
TYPICALLY 1 HOUR PER UNIT
- NEAT-IN THE DOOR APPEARANCE
- 3 SECONDS TO MANUAL IF POWER FAILS
- FULL TRUE CLEAR SPAN
- ADJUSTABLE TRACTION

**NOTE:** WELL BILT PATENTED CRANK PROVIDES 3 SECOND QUICK RELEASE FOR MANUAL OPERATION AND INFINITELY ADJUSTABLE TRACTION FOR ICE, SNOW, ECT.



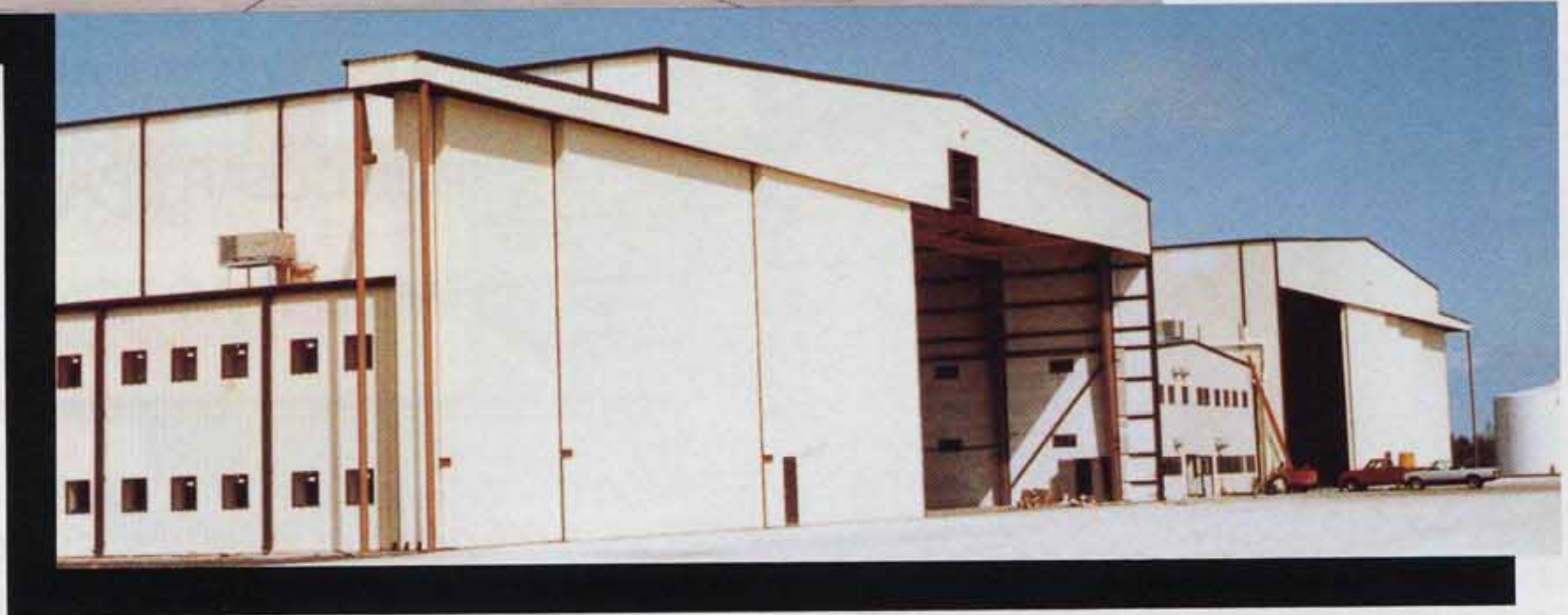
**PATENTED - IN THE DOOR INSTALLATION** ALLOWS FLUSH MOUNT AND TRUE CLEAR SPAN - NO WASTED REAL ESTATE CENTERLINE DRIVE AND ADJUSTABLE TRACTION PROVIDES INCREDIBLE UNMATCHED POWER WITHOUT SPECIAL NON-SKID SURFACES, EXOTIC ELECTRICAL WIRING OR VOLTAGES.



## NATIONAL FIRE PROTECTION ASSOCIATION #409

**WELL BILT HANGAR DOOR SYSTEMS** patented quick release system qualifies you under the National Fire Protection Association #409 for aircraft hangars. This symbol affixed to the exterior of your hangar door, located directly adjacent to the WELL BILT HANGAR DOOR SYSTEM quick disconnect crank, marks the spot where your fire authorities can cut an access hole to release the operator. Door can then be manually opened, thus saving lives, aircraft and equipment.





## ONLY WELL BILT HAS THIS TO OFFER

PATENT PROTECTED ★

- OPERATOR MOUNTS INSIDE DOOR ★
- ADJUSTABLE TRACTION FOR ALL TYPES OF WEATHER ★
- CENTER LINE DRIVE ELIMINATES DOOR WOBBLE, TIRE MISTRACKING AND SPINNING ★
- AVERAGE INSTALLATION IN TWO HOURS FOR BIPARTING SYSTEM
- POWER OUT 3 TO 4 TURNS ON CRANK TO OPERATE DOOR MANUALLY, NO TOOLS NEEDED, NO REPLACING AIR ★
- PRICED VERY LOW, ALL MODELS IN STOCK
- NO DOOR TOO BIG
- MANY TIMES THE TRACTION DUE TO CENTER LINE DRIVE ★
- ONE YEAR LIMITED WARRANTY
- ANY VOLTAGE
- ALL UNITS ARE PRE-WIRED AND COLOR CODED

★★ PATENT #4,672,773 ★★ PATENT #4,754,572 ★★ PATENT #5,170,831 ★★

UL Listed Operators

### Well Bilt Industries

1 Well Bilt Drive • Williston, Florida 32696-0100

Phone: 352/528-5566 • 1-800-940-BILT • Fax: 352/528-5614